

## EPM SERIES MODIFIED EPSILON CARBON-BRIQUETTE CARTRIDGES

- Nominal 10-micron rating\*
- Enhanced dirt holding capacity for extended cartridge life\*
- Bad taste & odor and chlorine taste & odor reduction\*
- Lowest pressure drop
- Economically priced

EPM Series cartridges are a modified version of our EP Series cartridge. An economical price makes this cartridge suitable for taste, odor and chlorine taste & odor reduction, as well as sediment filtration.\*

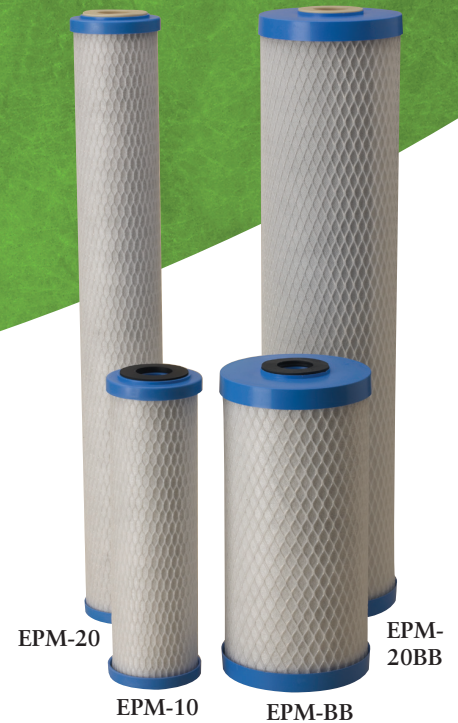
EPM Series cartridges are manufactured using a patented process that yields a cartridge with a nominal 10-micron filtration rating, high porosity and chlorine taste & odor reduction. The high porosity design helps prevent the cartridge from plugging before its adsorption capability is exhausted, maximizing the utilization of the carbon while maintaining low pressure drop.

These cartridges are protected by Endurawrap®, a uniquely formulated

polyolefin bilaminate pre-filter, designed to significantly increase the useful life of the cartridge by trapping sediment that typically plugs carbon block cartridges.

EPM Series cartridges are manufactured entirely from FDA-compliant materials making them an ideal choice for a wide range of residential, food service, commercial and industrial applications.

\* Based on manufacturer's internal testing.



EPM-20

EPM-10

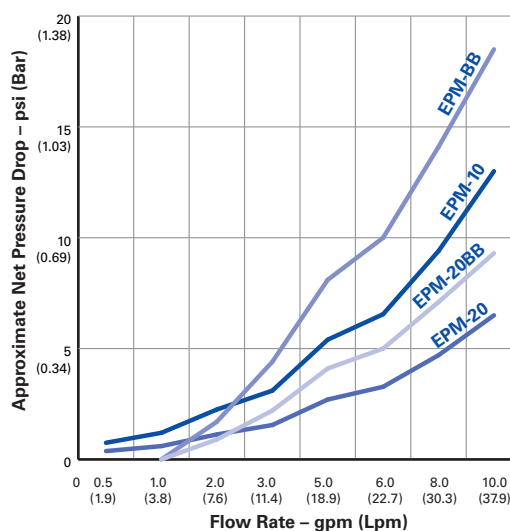
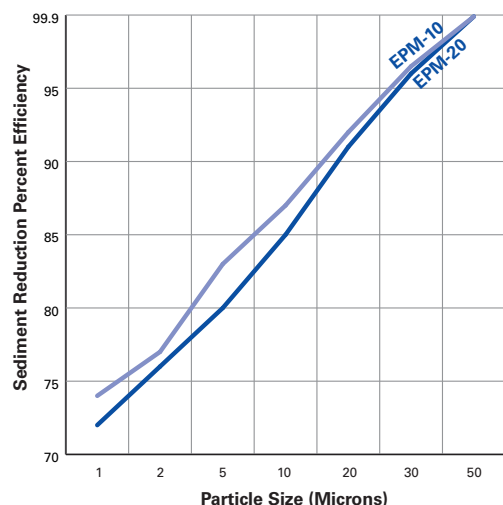
EPM-BB

EPM-20BB



# EPM SERIES

## Modified Epsilon Carbon-Briquette Cartridges



NOTE: Micron ratings based on 85% or greater removal of given particle size. Data obtained from actual particle counts, using AC Fine Test Dust at 1 gpm. Estimated capacity using 2.0 ppm free available chlorine (FAC) at 0.5 ppm break through.

### Cartridge Specifications and Performance Data

Model	Maximum Dimensions	Micron Rating* (nominal)	Initial ΔP (psi) @ Flow Rate (gpm)	Chlorine Taste & Odor Reduction @ Flow Rate
EPM-10	2 <sup>7</sup> / <sub>8</sub> " x 9 <sup>3</sup> / <sub>4</sub> " (73 mm x 248 mm)	10	1.5 psi @ 1 gpm (0.10 bar @ 3.8 Lpm)	>3,000 gallons @ 1 gpm (11,400L @ 3.8 Lpm)
EPM-20	2 <sup>7</sup> / <sub>8</sub> " x 20" (73 mm x 508 mm)	10	1.0 psi @ 2 gpm (0.07 bar @ 7.6 Lpm)	>6,000 gallons @ 2 gpm (22,700L @ 7.6 Lpm)
EPM-BB	4 <sup>5</sup> / <sub>8</sub> " x 9 <sup>3</sup> / <sub>4</sub> " (118 mm x 248 mm)	10	5.0 psi @ 2 gpm (0.35 bar @ 7.6 Lpm)	>15,000 gallons @ 2 gpm (56,750L @ 7.6 Lpm)
EPM-20BB	4 <sup>5</sup> / <sub>8</sub> " x 20" (118 mm x 508 mm)	10	4.0 psi @ 4 gpm (0.28 bar @ 15.1 Lpm)	>30,000 gallons @ 4 gpm (113,500L @ 15.1 Lpm)

\* Based on manufacturer's internal testing

### Materials of Construction

Filter Media	Bonded PAC
End Caps	Polypropylene
Outer Wrap	Polyolefin
Netting	Polyethylene
Gaskets	Buna-N
Temperature Rating	40–180°F (4.4–82.2°C)



Tested and Certified by NSF International to NSF/ANSI Standard 42 for material requirements only.

NOTE: Performance capacity depends on system design, flow rate and certain other application conditions.

NOTE: When greater chlorine taste & odor reduction is needed, use the standard EP series blocks.

WARNING: Do not use with water that is microbiologically unsafe or of unknown quality without adequate disinfection before or after the system.

NOTE: EPM-Series cartridges will contain a very small amount of carbon fines (very fine black powder). After installation follow the instructions for flushing the cartridge to remove the fines before using the water. You should run (flush) the tap at least 20 seconds prior to using water for drinking or cooking purposes. This is particularly important if the tap has not been used daily.

U.S. Patent No. 5,976,432 & 5,823,668



502 Indiana Avenue • P.O. Box 1047 • Sheboygan, Wisconsin 53082-1047  
 Customer Service: 800.645.0267 • Fax: 888.203.7361 • supportspecialist@pentekfiltration.com  
 International: 920.457.9435 • Fax: 920.457.2417 • international@pentekfiltration.com  
 www.pentekfiltration.com



©2006 Pentair Filtration, Inc.

Printed in USA MR06 310076